



Company Profile

**Manafe Economic Real Estate Co.**

# About Manafe

A deeply rooted historical journey of cumulative experiences.

Manafe Economic Real Estate launched its operations from its headquarters in Jeddah, responding to the needs of the thriving real estate market in Saudi Arabia. The company developed its first real estate product, "Al-Deera Center," in South of Jeddah in 2000. Since then, the company has developed over 30 projects across various real estate sectors.

24+

Years of experience

4

Branches

90+

Employees



## Our Mission

To provide comprehensive real estate solutions through innovation, keeping pace with the flourishing real estate market in KSA.



## Our Goal

To develop innovative and integrated real estate projects that enhance quality of life and meet the aspirations of our clients.



## Our Vision

To be the leading name in investing, developing, and operating commercial real estate across all sectors.

# Manafe in Numbers



30+

Projects

Successfully Developed



2,8+

Bn. Riyals

Value of Developed Projects



5,6+

Mn. m2

Developed Land Area



600+

K m2

Developed BUA



200+

Clients

Were Served



370+

Properties

Under Management

**2000**  
 The First Project by the Company's Founder

  
**2001**  
 Diverse Investments in Raw Lands and Commercial Lands

  
**2008**  
 The First Strip Center

  
**2009**  
 The First Residential Subdivision in Jazan


**2011**  
 The First Residential Complex  
  
 The First Model Warehouses  


**2012**

The First Agricultural Subdivision  


The First Mall  


**2010**

  
 The First Hotel

  
 The First Logistics Subdivision

**2013**

  
 Development of the Model Warehousing Product

  
 The First Stand-alone Anchor

  
**2016**  
 The First Luxurious Office Tower

  
**2018**  
 The First Find-Dining Complex

  
**2019**  
 The Largest Model Warehousing Project

  
**2024**

The First Car Services Complex

  
 SARI CENTER

**2021**  
 The First Renovation Project

# Our Strengths



Flexible and innovative investment structures with extensive expertise in company establishment and governance.



Strategic alliances with investors, top-tier consultants, contractors, and financing entities.



A dedicated and specialized team in real estate investment, development, and operations.



Expertise in the latest regulations and laws, with extensive experience in dealing with regulatory authorities.



Investor risk management and verification at every step.



Payment in stages tied to progress and delivered milestones for investors.



Specialized in commercial real estate development



A proven track record of achievements and diverse projects.

# Our Solutions



## Investment Management

Focusing on delivering the best returns for clients through site analysis and developing outstanding plans and ideas. This is achieved by managing economic, financial, and legal studies, and coordinating with experts, consultants, and designers to secure building permits for the project.

## Development Management

Managing project time, quality, and cost by coordinating the efforts of contractors, consultants, and suppliers. Providing solutions and suggestions to enhance workflow and reduce costs, ensuring the project is completed within the budget approved in the feasibility study.



## Marketing Management

Contributing to the development of real estate opportunities and project concepts in line with market needs, crafting effective marketing strategies, and managing the production of suitable marketing materials to attract target groups of global brands and companies, ensuring the successful completion of deals.

## Property Management

Representing property owners in managing relationships with tenants, including communication and collection, while efficiently controlling operating costs to enhance owners' operating profit margins.



## Facilities Management

Preserving owners' assets by developing maintenance and operation plans, managing contracts and procurement with suppliers and service providers, and overseeing their performance to ensure the sustainability and value appreciation of the real estate asset.

## Our Clients

## Our Alliances



# Our Projects

## Offices



Rovan Tower



Zan Square



Lavender Tower

## Retail



Al-Deera Center



Sarwat Center



Sari Center



Waha Center



Jawad Center



Fares Center



Cascade



Carplex

## Logistic



Modern Stores



Qawafil Center



Stars Center



Silal Almadinah

## Hospitality and Residential



Damasina Resort



Al-Dhiyah Residential Complex



Western Lamar Hotel



Eman Pearl Hotel



Roya Makkah Hotel



Dubai Hotel

## Subdivisions



Makhazen Jeddah



alehisan



Huda Albasateen



Rawaf



Alnakheel Agricultural



Alworod Residential



Almsarrah



Alnawariah



Laba



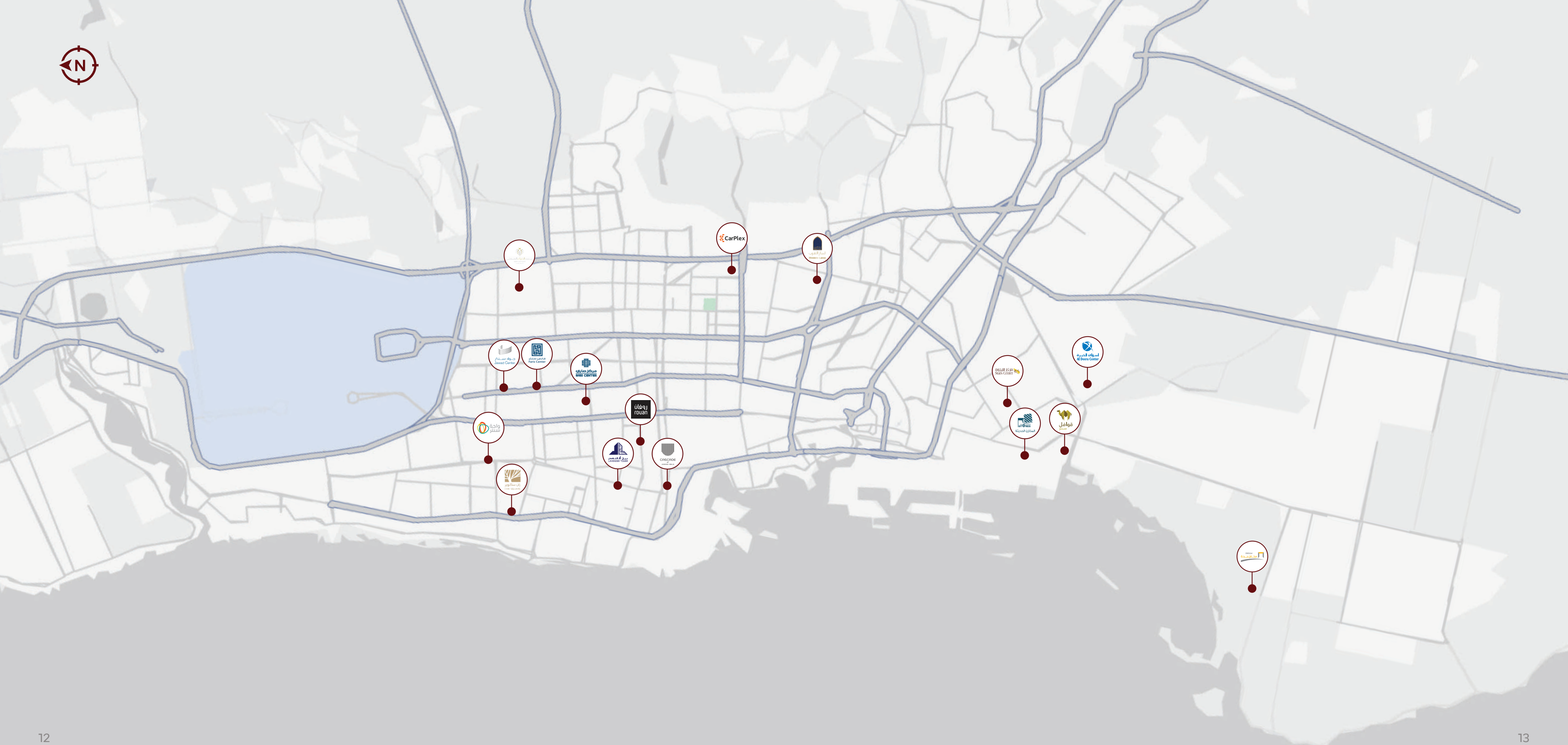
Alzohoor



Albasateen  
Agricultural 1



Albasateen  
Agricultural 2





## Offices **Lavender Tower**

A mixed-use tower on Prince Saud Al-Faisal Road in one of the most prestigious areas. It offers a unique experience combining serene residential spaces with integrated commercial services within a single building.



location

BUA

**31,450**

No. of Units

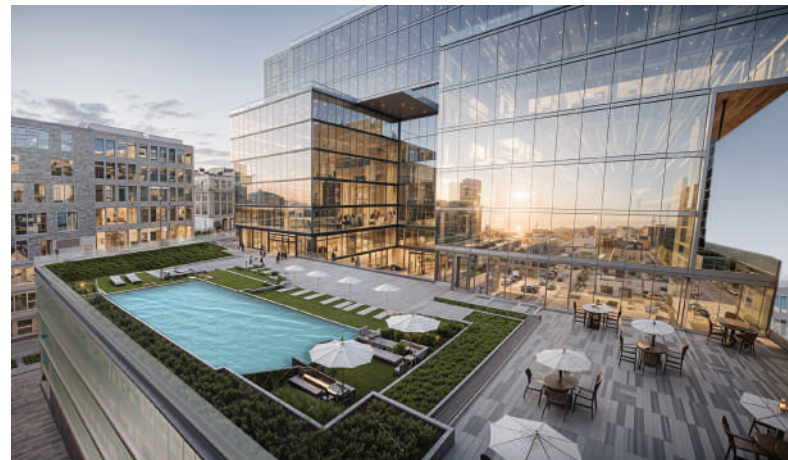
-

Land Area

**6,000**

Project Status

**Design Phase**



روان  
rovan

## Offices **Rovan Tower**

A luxurious administrative building offering an upscale experience comparable to high-end hotel facilities. It provides innovative services and designs within a prime location in the business district on Prince Saud Al-Faisal Road.



location

BUA

**25,150**

No. of Units

**61**

Land Area

**3,300**

Project Status

**In Operation**





location	No. of Units	Project Status	BUA	Land Area
South Corniche Road - Al-Mahjar - Jeddah	105	In Operation	34,550	53,000



المخازن الحديثة

Logistic **Modern Stores**

The project features a wide façade extending 1 kilometer along King Faisal Road. It is the latest warehouse project by the company, serving the food supply and consumer goods sectors. It provides an intelligent solution that integrates display, storage, and management into a comprehensive commercial unit.



location	No. of Units	Project Status	BUA	Land Area
Al-Khumrah Road - Al-Mahjar - Jeddah	68	Sold	15,000	40,000

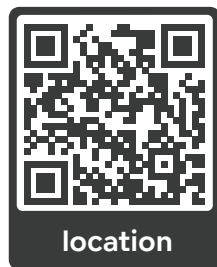


BUA	Land Area
73,150	134,700
No. of Units	Project Status
155	In Operation



## Retail **Cascade**

A luxury dining complex consisting of three tiered floors connected by a stunning waterfall surrounded by breathtaking green areas. The project combines elegance and simplicity in design, creating an innovative architectural environment that humanizes the buildings, offering a unique and delightful user experience.

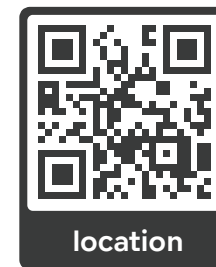


BUA	Land Area
<b>20,950</b>	<b>7,800</b>
No. of Units	Project Status
<b>12</b>	<b>In Operation</b>



## Retail **Carplex**

Carplex Project introduces a groundbreaking concept in vehicle service complexes. It provides an innovative solution combining car maintenance centers, spare parts stores, and administrative offices in a modern framework. The project is characterized by a contemporary and eco-friendly environment, free of noise, visual, and environmental pollution, offering a comprehensive and comfortable user experience.



BUA	Land Area
<b>30,950</b>	<b>14,000</b>
No. of Units	Project Status
<b>110</b>	<b>Under Construction</b>



## Logistic **Silal Almadinah**

A specialized wholesale commercial center located on King Khalid Road (Third Ring Road), consisting of several specialized areas, in addition to a central plaza designated for various activities and events.



location

BUA	Land Area
<b>137,100</b>	<b>250,500</b>
No. of Units	Project Status
-	<b>Design Phase</b>



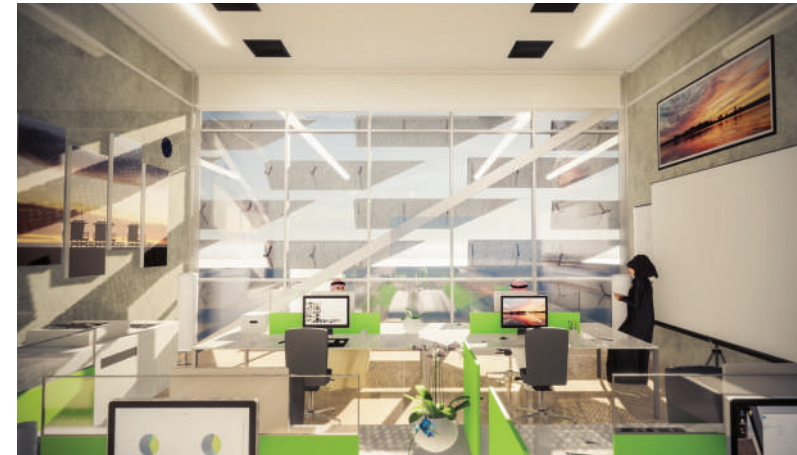
## Retail **Zan Square**

A futuristic commercial and administrative project with an unconventional design. It consists of commercial exhibitions and rooftop office villas, with a prominent front façade extending over 130 meters along King Abdulaziz Road, supported by columns resembling beech trees.



location

BUA	Land Area
<b>45,300</b>	<b>18,800</b>
No. of Units	Project Status
<b>110</b>	<b>Under Construction</b>





location	No. of Units	Project Status	BUA	Land Area
Sari Road - Al Faisaliah - Jeddah	22	In Operation	14,850	14,400



location	No. of Units	Project Status	BUA	Land Area
King Fahd Road - Al-Nuzhah - Jeddah	12	In Operation	4,100	5,100



location	No. of Units	Project Status	BUA	Land Area
Prince Sultan Road - Al Salamah - Jeddah	4	In Operation	3,600	4,000



location	No. of Units	Project Status	BUA	Land Area
King Fahd Road - Al-Nuzhah - Jeddah	15	In Operation	16,700	16,900



location	No. of Units	Project Status	BUA	Land Area
Al-Mahjar Street - Al-Mahjar - Jeddah	350	Sold	15,000	16,600



location	No. of Units	Project Status	BUA	Land Area
King Fahd Road - Al Rabee District - Sabya	56	Sold	26,100	34,600

## Hospitality and Residential



## Subdivision



## Key Tenants



## Our Credentials





☎ 920029099

✉ [info@manafeco.com](mailto:info@manafeco.com)

🌐 [www.manafeco.com](http://www.manafeco.com)